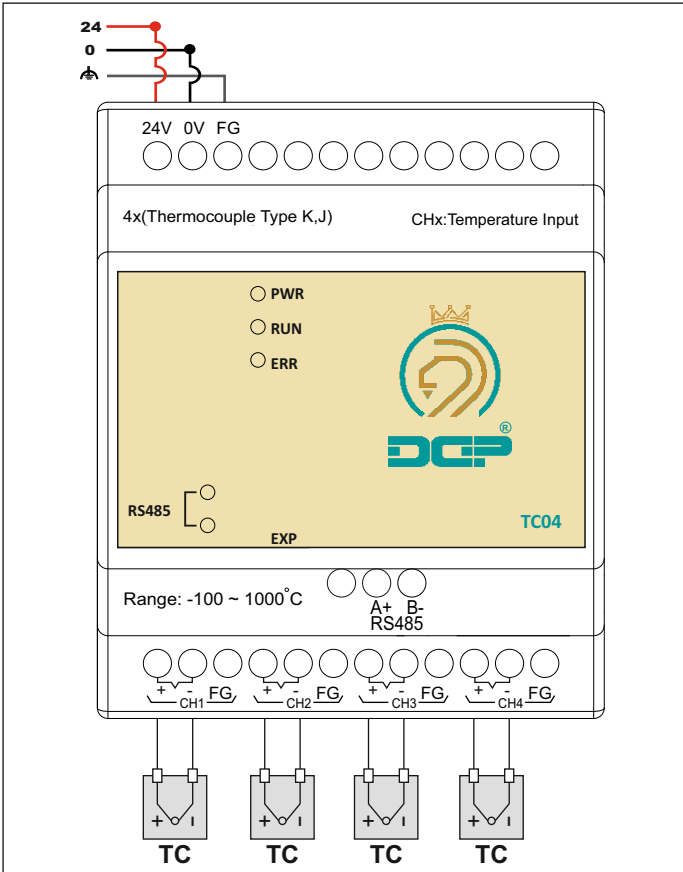


DGP

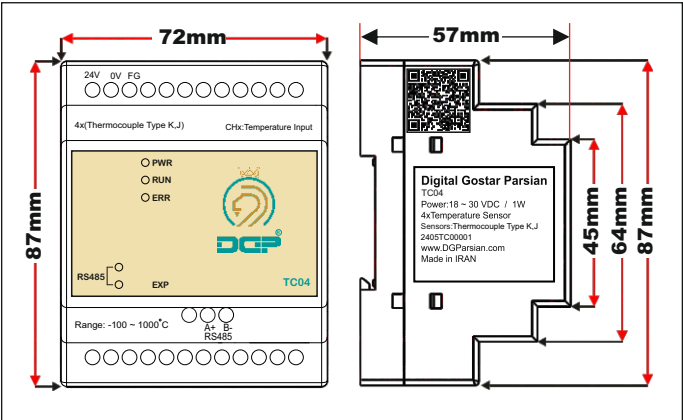
TC04


Platinum Temperature Module (TC04)	Centigrade (C)	Fahrenheit (F)
Power Supply Voltage	24 VDC (18 ~ 30 VDC) (-15%~+20%)	
Analog Input Channel	4 channels per module	
Sensors Type	J-type or K-type thermocouple	
Temperature Input Range	J-type: -100°C~700°C K-type: -100°C~1000°C	J-type: -148°F~1292°F K-type: -148°F~1832°F
Digital Conversion Range	J-type: K-1000~K7000 K-type: K-1000~K10000	J-type: K-3280~K12920 K-type: K-1480~K18320
Resolution	(0.1 C)	(0.18 F)
Overall Accuracy	±0.5% of full scale of 25°C(77°F), ±1% of full scale during 0~55 °C (32~131°F)	
Response Time	250 ms x channels	
Isolation Method	Isolation between digital and analog circuitry. There is no isolation between channels.	
Digital Data Format	2's complement of 16-bit, (13 Significant Bits)	
Average Function	Yes (CR#2~CR#5 may be set and the range is K1~K4096)	
Self Diagnostic Function	Yes	
Communication Mode (RS-485)	MODBUS ASCII/RTU Mode. Communication baud rate of 4800 / 9600 / 19200 / 38400 / 57600 / 115200. For ASCII mode, date format is 7Bits, even, 1 stop bit (7 E 1). For RTU mode, date format is 8Bits, even, 1 stop bit (8 E 1). The RS-485 is disabled when the DGP TC04 is connected in series to an MPU.	



DGP

TC04



Description	Product plate inserting information	Line								
By scanning the barcode, certain information such as website address, email address and phone number will be provided to you.	 QR Code	1								
EXP manufacturer	Digital Gostar Parsian	۲								
EXP model	TC04	۳								
Product's permissible voltage limits/Power consumption	Power: 18 ~ 30 VDC / 3W	۴								
Four 3-string-wire temperature inputs	4x Temperature Sensor	۵								
1.Production year 2.Production week 3.Expansion card model 4.Sequence of production for expansion card	2405TC00001 <table><tr><td>24</td><td>05</td><td>TC</td><td>00001</td></tr><tr><td>1</td><td>2</td><td>3</td><td>4</td></tr></table>	24	05	TC	00001	1	2	3	4	۶
24	05	TC	00001							
1	2	3	4							
The original website of the EXP manufacturer	www.DGParsian.ir	۷								
Made in Iran	Made in Iran	۸								



Usage of LED indicators

Description	LED
Stands for POWER and it turns on once the input voltage is applied	PWR
When the PLC is ready for operation, this LED turns on	RUN
This LED lights up when encountering any error	ERR
When using the Rs485 communication network, this LED turns on	RS485

DGP

TC04

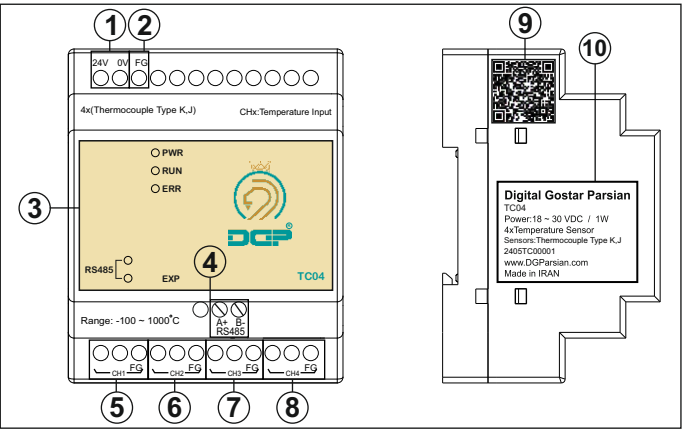
Capable of connecting to all PLCs of blue membrane
24V-DC input voltage
Equipped with RS485 network for remote control capability
4 x thermocouple input Sensors
Temperature measurement range from -100 to 1000 °C
Temperature measurement accuracy 0.1C
LED displays the status of network

Warning:

Applying excessive force to terminal screws will damage the terminals.

Warranty:

- * This product comes with a one-year replacement warranty and after-sales service.
- * The warranty will be void if any of the following conditions occur:
 - Applying voltage beyond the allowed limit
 - Exceeding the allowed current from digital outputs
 - Deformation caused by breakage, impact, and excessive heat
 - Changing or replacing parts by unauthorized personnel
 - Exposure to corrosive liquids and gases



1.Input voltage	2.Earth
3.LED display	4.RS485 network
5.First temperature input	6.Second temperature input
7.Third temperature input	8.Fourth temperature input
9.QR-Code	10.EXP plate